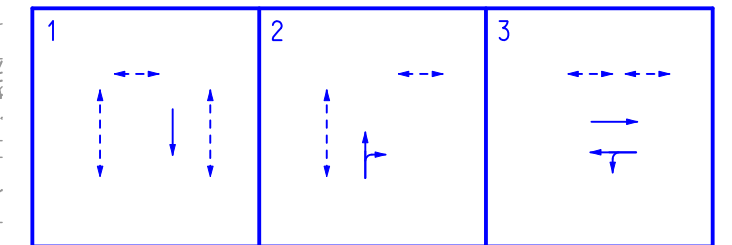
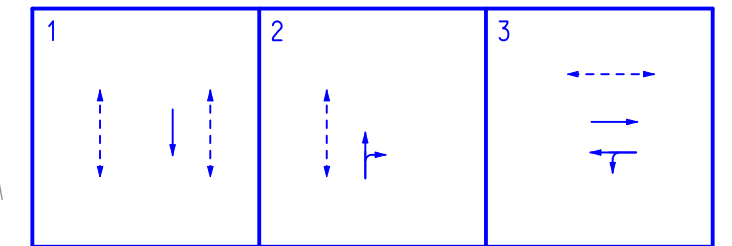


現時的交通燈號控制方法  
EXISTING METHOD OF CONTROL




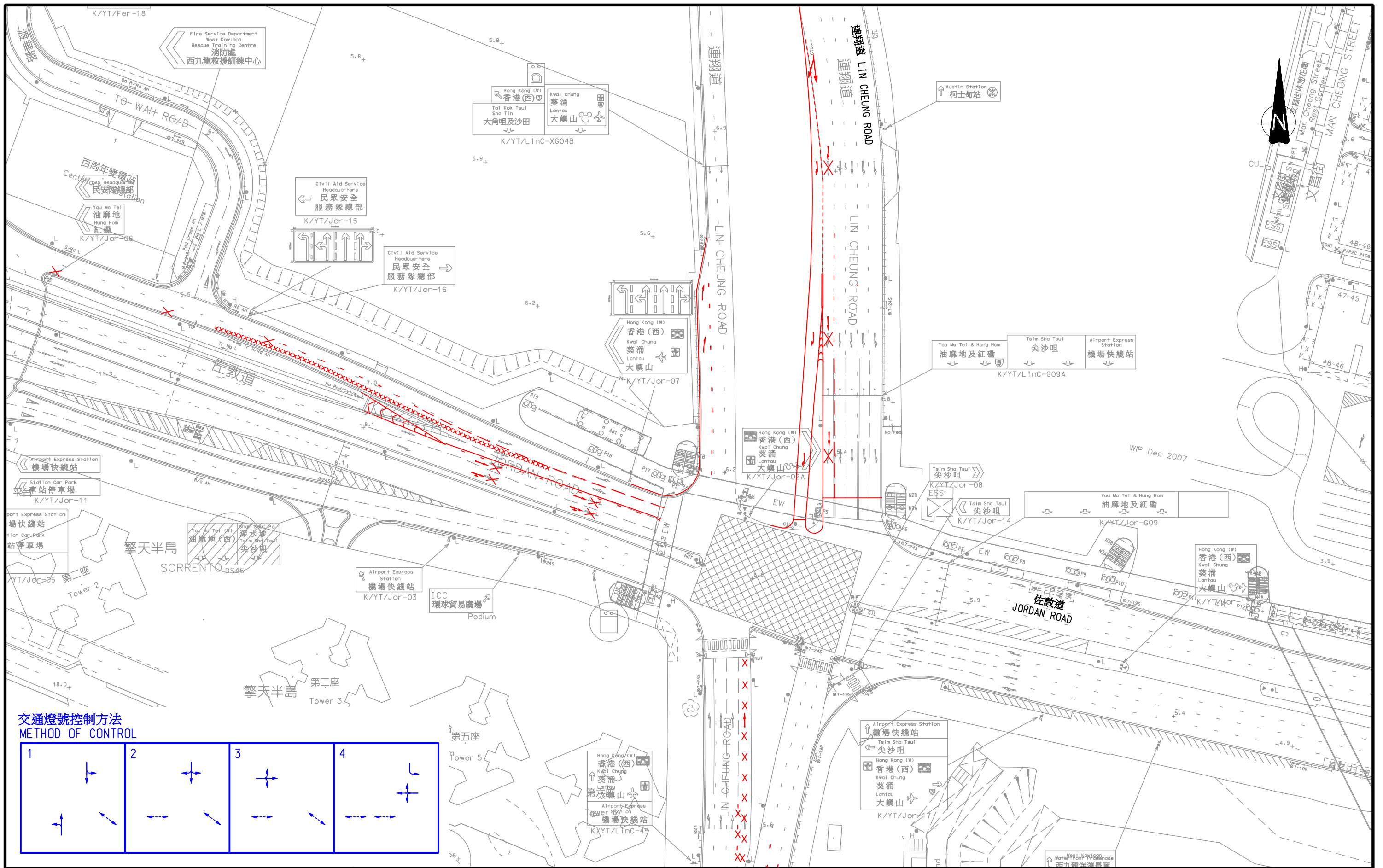
建議的交通燈號控制方法  
PROPOSED METHOD OF CONTROL



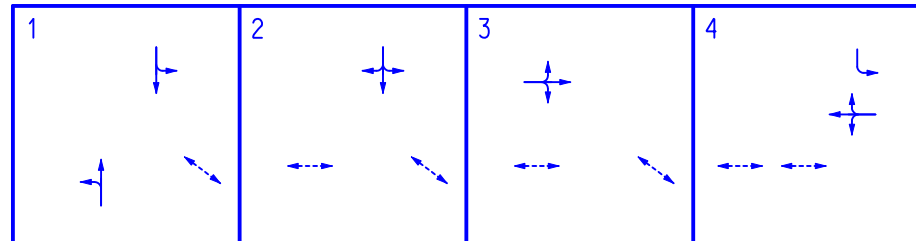
Rev.	Description	Approved	Date

合約編號TD54/2008西九龍填海發展區交通研究  
AGREEMENT NO. TD 54/2008 WEST KOWLOON RECLAMATION DEVELOPMENT TRAFFIC STUDY  
建議的彌敦道/窩打老道路口短期交通改善方案  
**PROPOSED SHORT-TERM IMPROVEMENT SCHEME FOR THE JUNCTION OF  
NATHAN ROAD / WATERLOO ROAD**

Figure No. <b>4.1</b>		Rev. -
Designed By: HEI	Scale: 1:500	
Checked By: SPC	Date: DEC. 2009	
Ref.: 27816-1/ES/F4.1/DGN/CKC/06JAN10		



交通燈號控制方法  
METHOD OF CONTROL

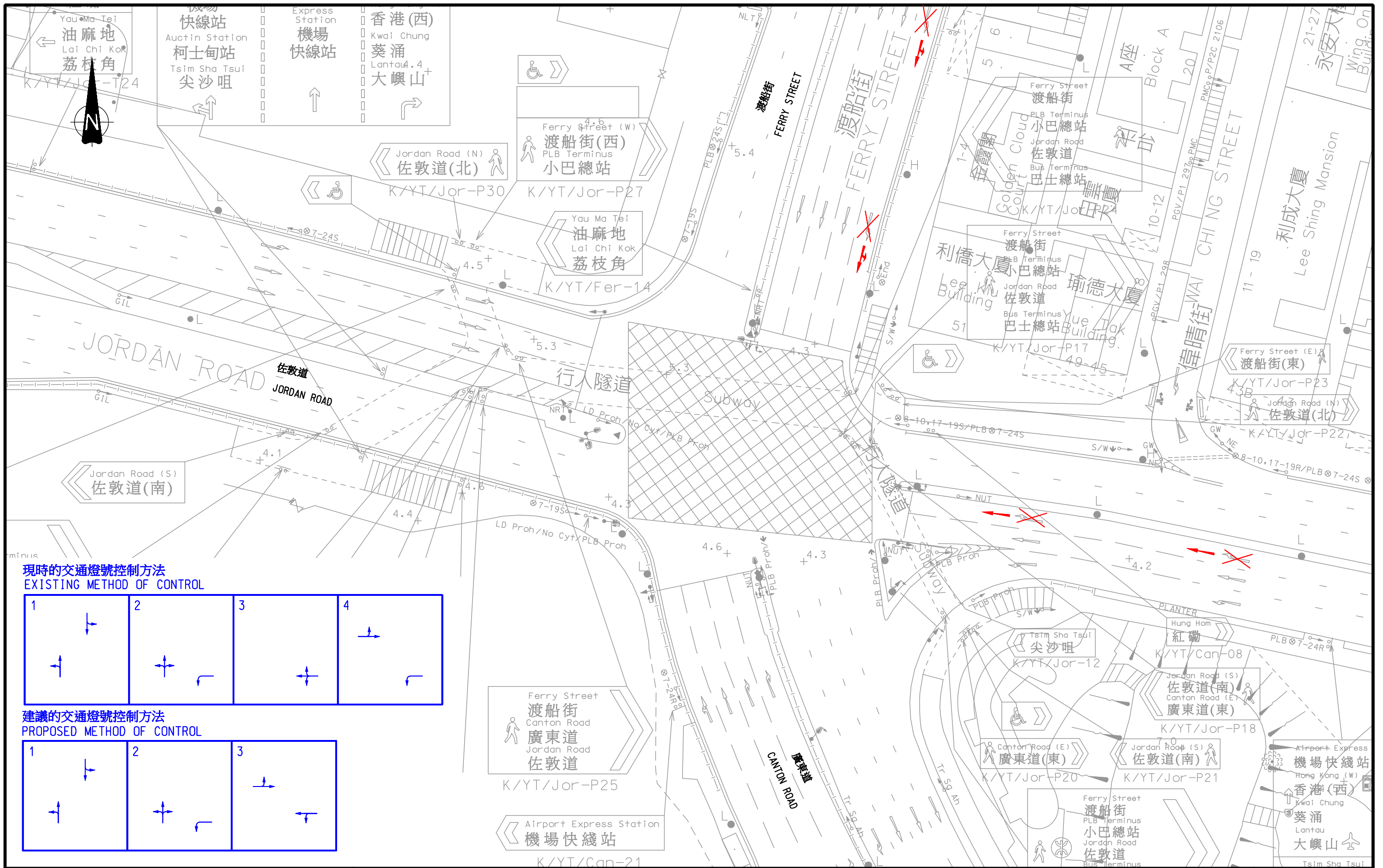


Rev.	Description	Approved	Date

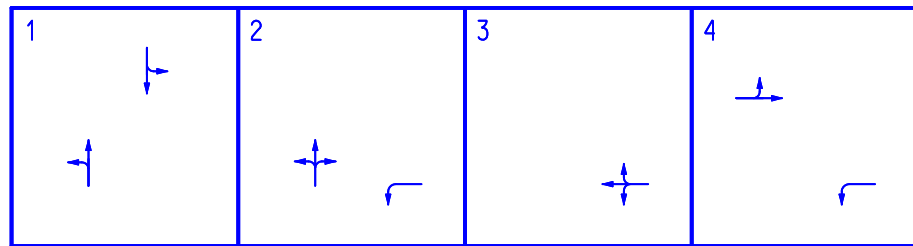
合約編號 TD54/2008 西九龍填海發展區交通研究  
AGREEMENT NO. TD 54/2008 WEST KOWLOON RECLAMATION DEVELOPMENT TRAFFIC STUDY  
建議的佐敦道/連翔道路口短期交通改善方案  
**PROPOSED SHORT-TERM IMPROVEMENT SCHEME FOR THE JUNCTION OF  
JORDAN ROAD / LIN CHEUNG ROAD**

Figure No.	<b>4.2</b>	Rev.	-
Designed By:	HEI	Scale:	1 : 1000
Checked By:	SPC	Date:	DEC. 2009
Ref.: 27816-1/ES/F4.2.DGN/CKC/06JAN10			

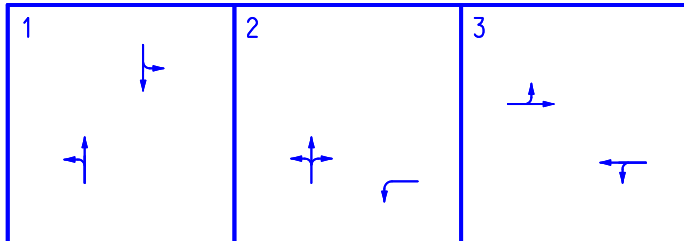




現時的交通燈號控制方法  
EXISTING METHOD OF CONTROL



建議的交通燈號控制方法  
PROPOSED METHOD OF CONTROL



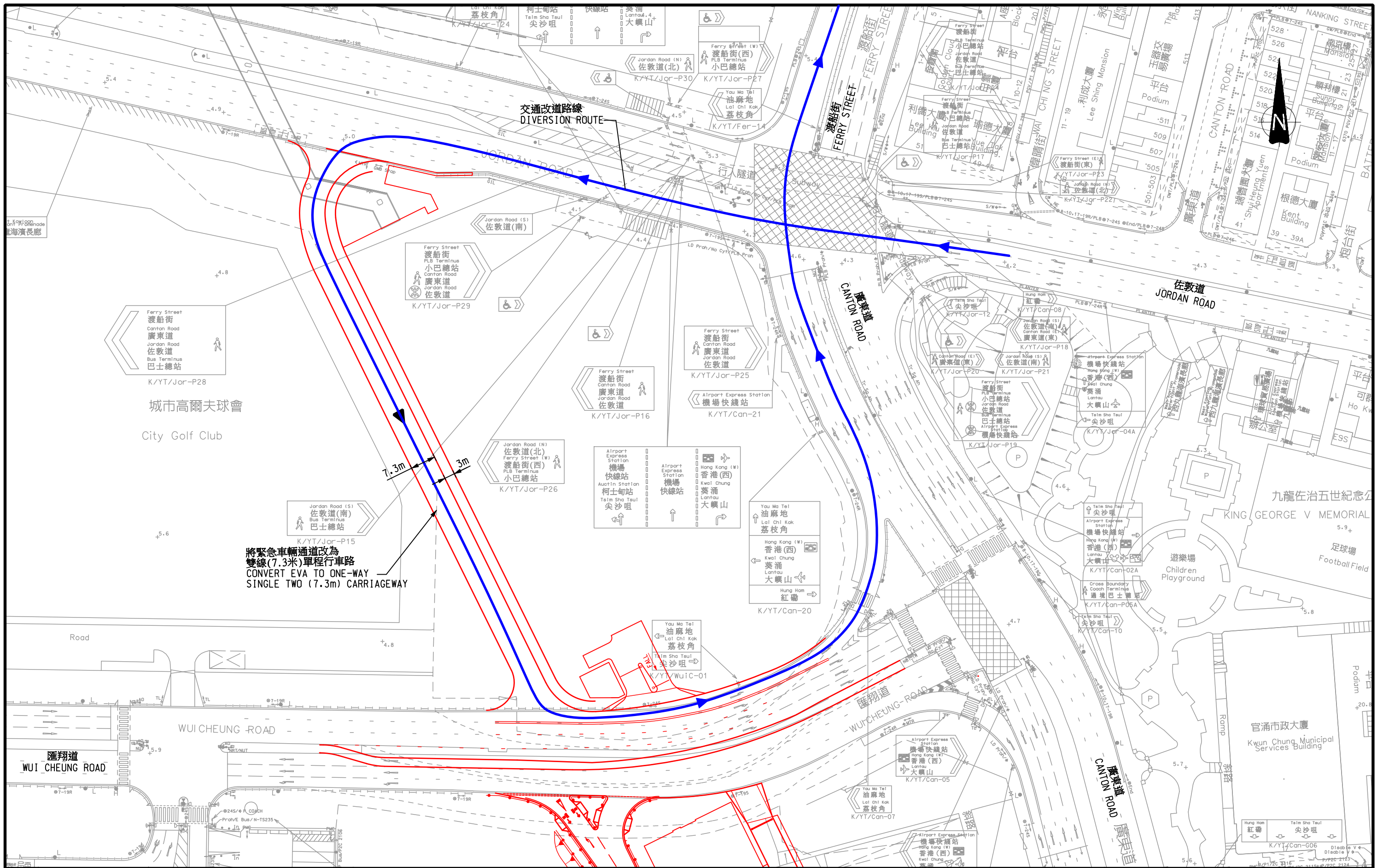
Rev.	Description	Approved	Date

合約編號 TD54/2008 西九龍填海發展區交通研究  
AGREEMENT NO. TD 54/2008 WEST KOWLOON RECLAMATION DEVELOPMENT TRAFFIC STUDY

**建議的佐敦道/渡船街/廣東道路口短期交通改善方案**  
**PROPOSED SHORT-TERM IMPROVEMENT SCHEME FOR THE JUNCTION OF JORDAN ROAD / FERRY STREET / CANTON ROAD**

Figure No.	<b>4.3</b>	Rev.	-
Designed By:	HEI	Scale:	1 : 500
Checked By:	SPC	Date:	DEC. 2009
Ref.: 27816-1/ES/F4.3.DGN/CKC/06JAN10			





將緊急車輛通道改為  
雙線(7.3米)單程行車路  
CONVERT EVA TO ONE-WAY  
SINGLE TWO (7.3m) CARRIAGEWAY

交通改道路線  
DIVERSION ROUTE

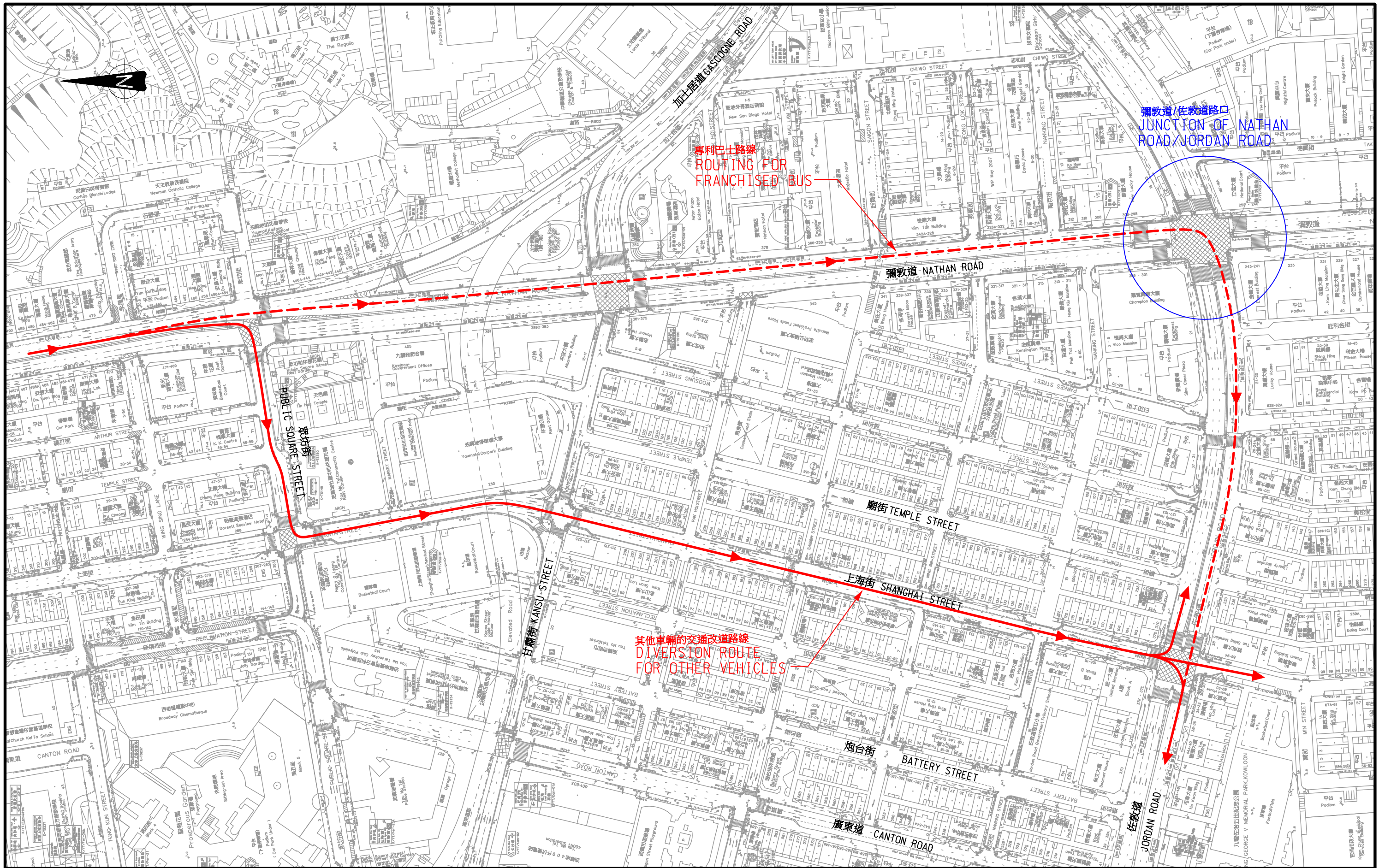
合約編號TD54/2008西九龍填海發展區交通研究  
AGREEMENT NO. TD 54/2008 WEST KOWLOON RECLAMATION DEVELOPMENT TRAFFIC STUDY

禁止佐敦道西行右轉後的交通改道路線圖  
DIVERSION ROUTE FOR THE BANNED JORDAN ROAD WB RIGHT-TURNING MOVEMENT

Figure No.	4.4	Rev.	-
Designed By:	HEI	Scale:	1 : 1000
Checked By:	SPC	Date:	DEC. 2009
Ref.: 27816-1/ES/F44.DGN/LY/29DEC09			



Rev.	Description	Approved	Date

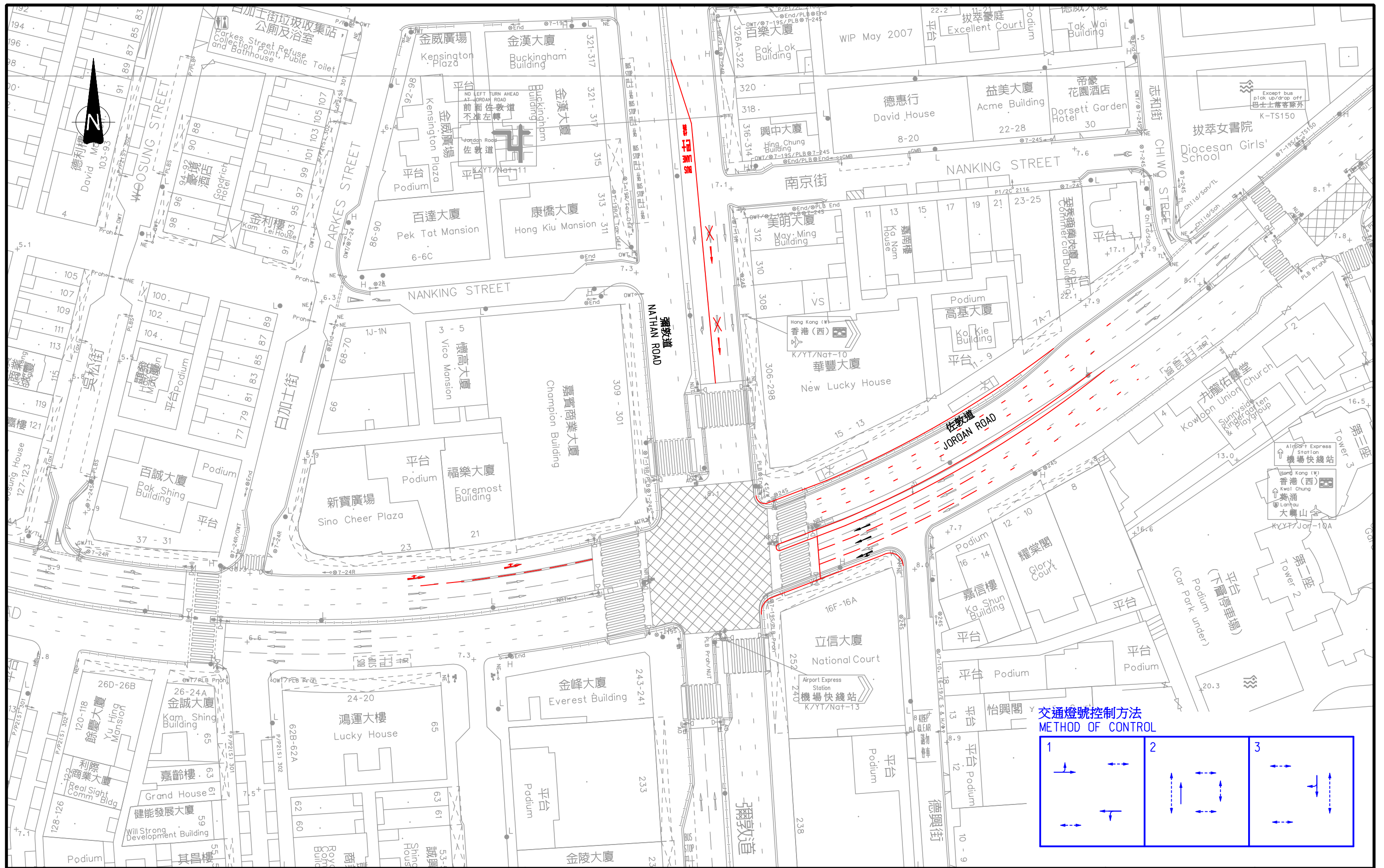


合約編號TD54/2008西九龍填海發展區交通研究  
 AGREEMENT NO. TD 54/2008 WEST KOWLOON RECLAMATION DEVELOPMENT TRAFFIC STUDY  
**禁止彌敦道南行右轉後的交通改道路線圖**  
**DIVERSION ROUTE FOR THE BANNED NATHAN ROAD SB RIGHT-TURNING MOVEMENT**

Figure No. **4.5** Rev. -  
 Designed By: HEI Scale: 1 : 2000  
 Checked By: SPC Date: DEC. 2009  
 Ref.: 27814-1/ES/F45.DGN/LKC/30DEC09



Rev.	Description	Approved	Date



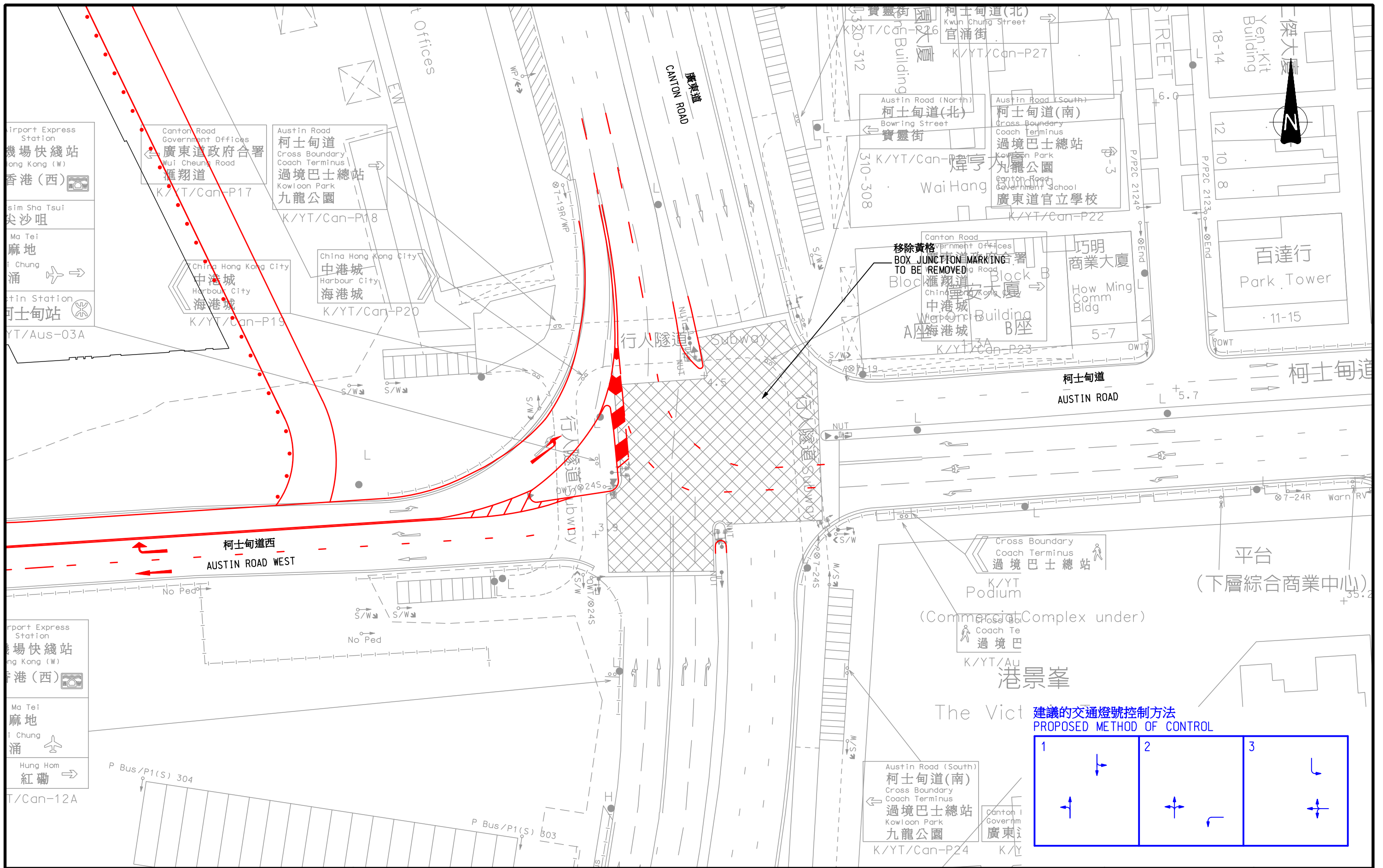
Rev.	Description	Approved	Date

合約編號 TD54/2008 西九龍填海發展區交通研究  
 AGREEMENT NO. TD 54/2008 WEST KOWLOON RECLAMATION DEVELOPMENT TRAFFIC STUDY  
**建議的彌敦道/佐敦道路口短期交通改善方案**  
**PROPOSED SHORT-TERM IMPROVEMENT SCHEME FOR THE JUNCTION OF**  
**NATHAN ROAD / JORDAN ROAD**

Figure No.	<b>4.6</b>	Rev.	-
Designed By:	HEI	Scale:	1 : 800
Checked By:	SPC	Date:	DEC. 2009
Ref.: 27814-1/ES/F4.6.DGN/CKC/06JAN10			







Airport Express Station  
 機場快綫站  
 Hong Kong (W)  
 香港(西)

Ma Tei  
 麻地  
 Hung Hom  
 紅磡

P Bus/P1(S) 304  
 P Bus/P1(S) 603

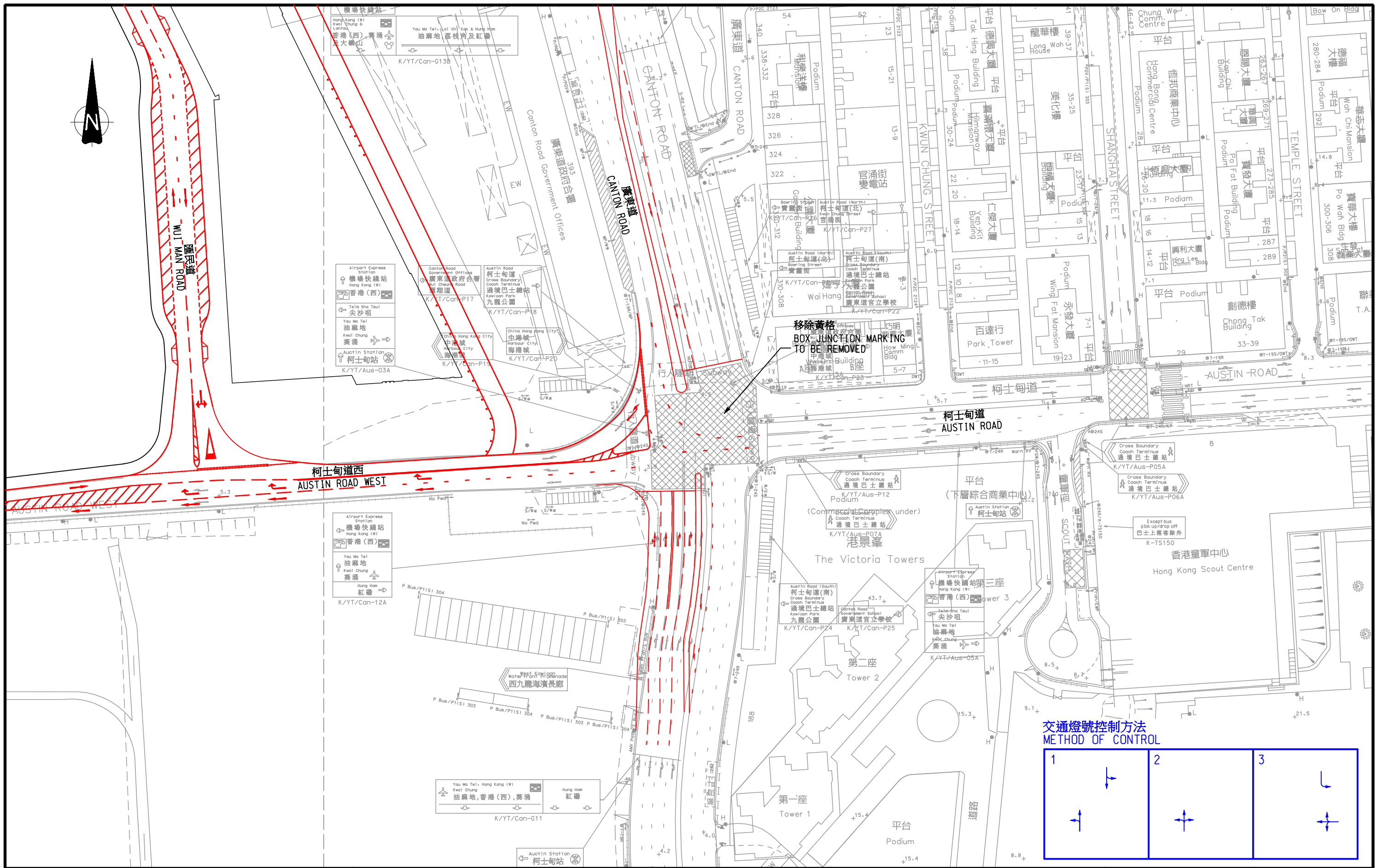
Rev.	Description	Approved	Date

合約編號 TD54/2008 西九龍填海發展區交通研究  
 AGREEMENT NO. TD 54/2008 WEST KOWLOON RECLAMATION DEVELOPMENT TRAFFIC STUDY

**新增的柯士甸道西東行行車路概要圖**  
**SCHEMATIC LAYOUT OF ADDITIONAL AUSTIN ROAD WEST EB CARRIAGEWAY**

Figure No. **4.8** Rev. -  
 Designed By: HEI Scale: 1:500  
 Checked By: SPC Date: DEC. 2009  
 Ref.: 27814-1/ES/F48.DGN/CKC/06JAN10





Rev.	Description	Approved	Date

合約編號 TD54/2008 西九龍填海發展區交通研究  
 AGREEMENT NO. TD 54/2008 WEST KOWLOON RECLAMATION DEVELOPMENT TRAFFIC STUDY

**建議的廣東道/柯士甸道/柯士甸道西路口短期交通改善方案**  
**PROPOSED SHORT-TERM IMPROVEMENT SCHEME FOR THE JUNCTION OF CANTON ROAD / AUSTIN ROAD / AUSTIN ROAD WEST**

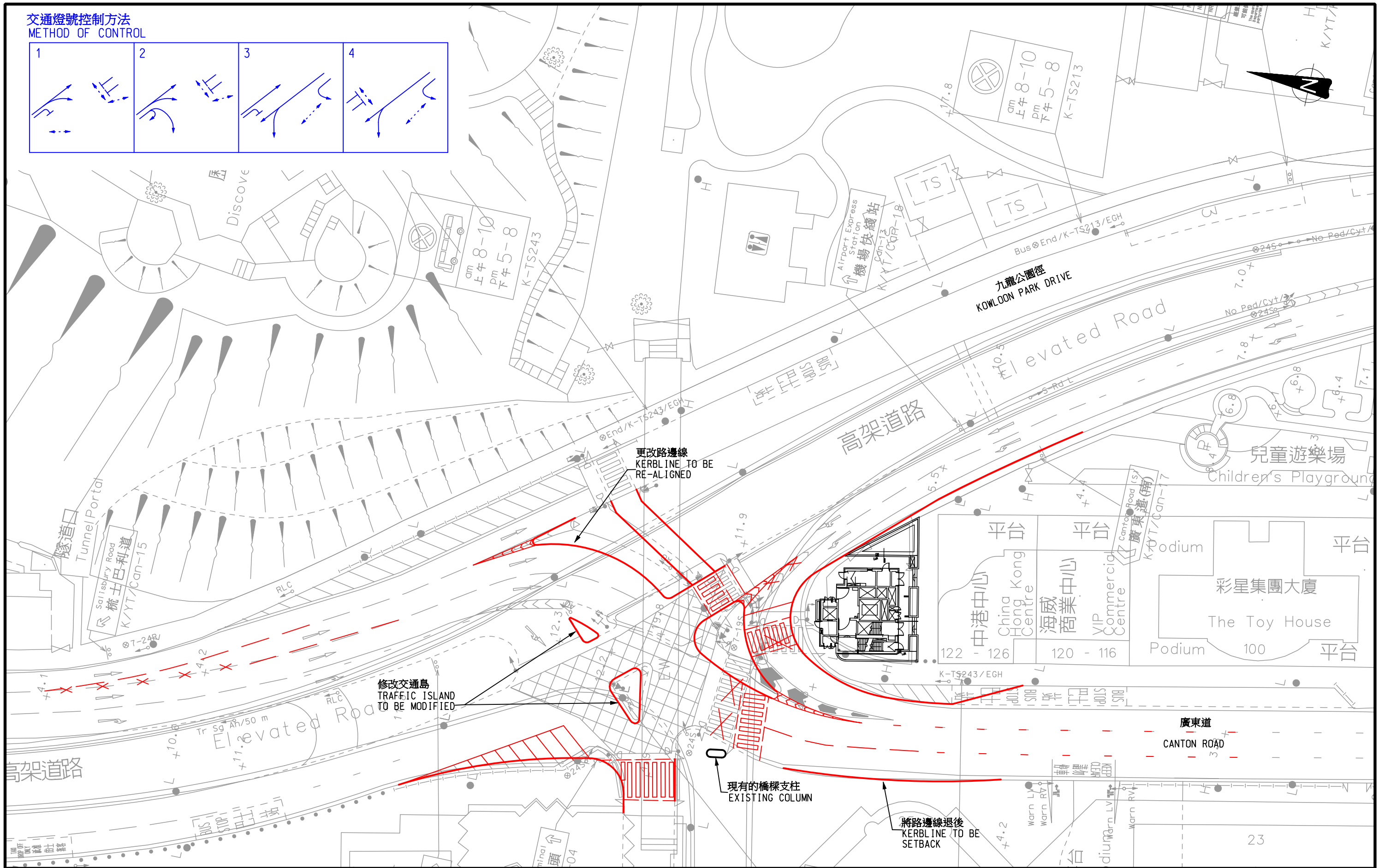
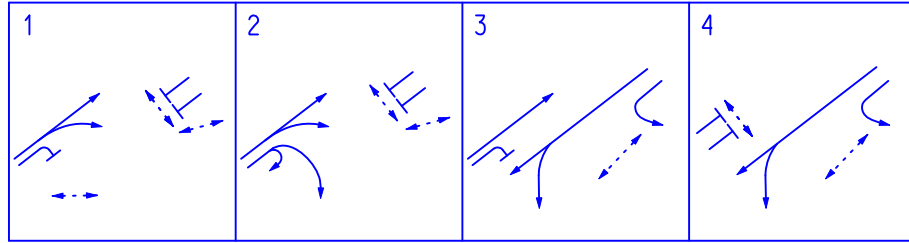
Figure No. **4.9** Rev. -

Designed By: HEI Scale: 1:1000  
 Checked By: SPC Date: DEC. 2009

Ref.: 27816-1/ES/F4.9.DGN/CKC/06JAN10



交通燈號控制方法  
METHOD OF CONTROL

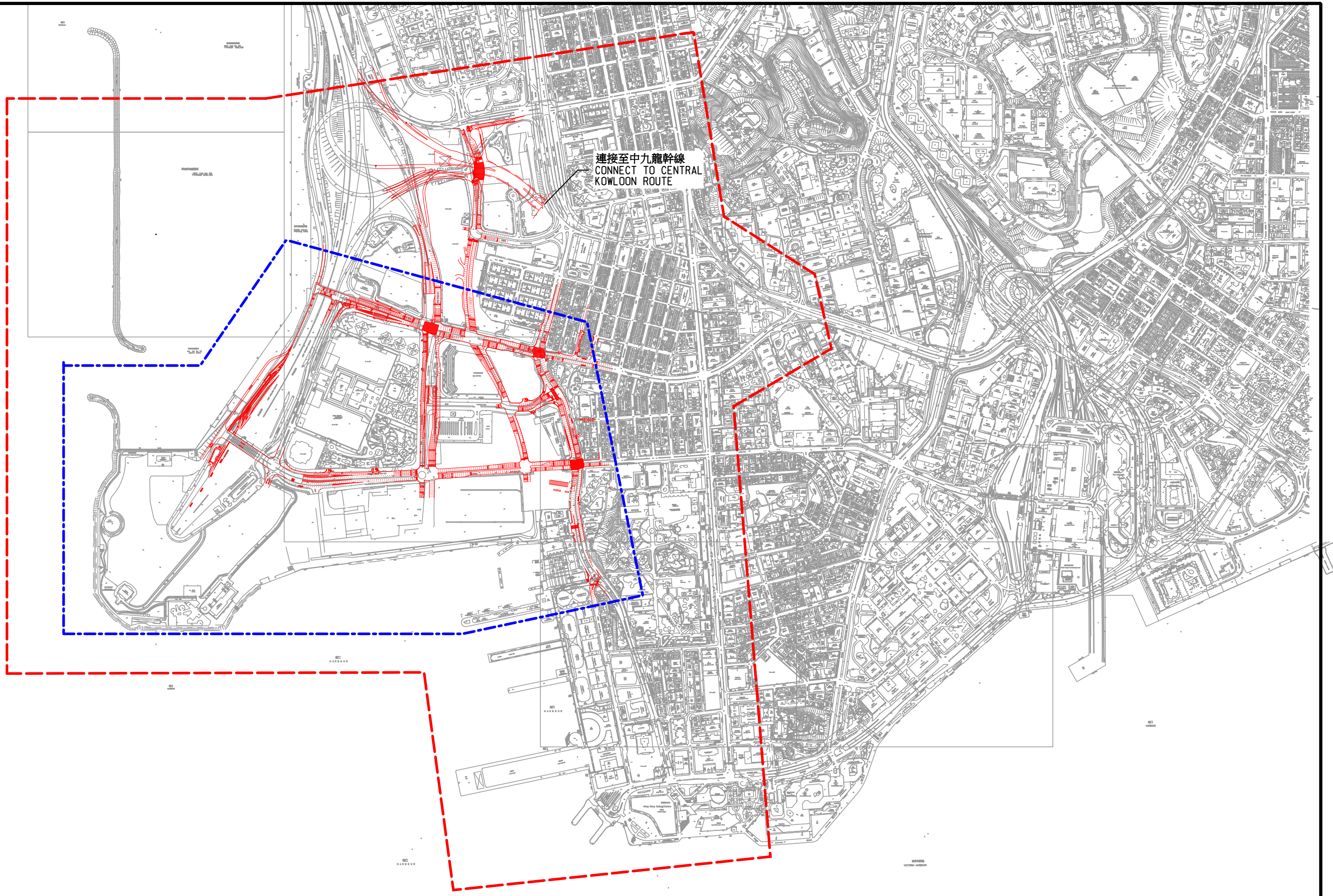
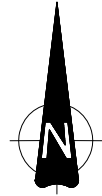


Rev.	Description	Approved	Date

合約編號TD54/2008西九龍填海發展區交通研究  
AGREEMENT NO. TD 54/2008 WEST KOWLOON RECLAMATION DEVELOPMENT TRAFFIC STUDY  
建議的廣東道/九龍公園徑路口短期交通改善方案  
PROPOSED SHORT-TERM IMPROVEMENT SCHEME  
FOR THE JUNCTION OF CANTON ROAD / KOWLOON PARK DRIVE

Figure No.	4.10	Rev.	-
Designed By:	HEI	Scale:	1 : 500
Checked By:	SPC	Date:	DEC. 2009
Ref.: 27816-1/ES/F410.DGN/CKC/06/JAN10			





圖例：  
LEGEND：

- 研究範圍  
STUDY AREA
- 重點範圍  
FOCUS AREA

合約編號TD54/2008西九龍填海發展區交通研究  
AGREEMENT NO. TD 54/2008 WEST KOWLOON RECLAMATION DEVELOPMENT TRAFFIC STUDY

2031年參考道路網  
2031 REFERENCE ROAD NETWORK

Figure No. <b>5.1</b>		Rev. -
Designed By : HEI	Scale : N.T.S.	
Checked By : SPC	Date : DEC. 2009	
Ref. : 27814-1/ES/FS1.DGN/CKC/06.JAN10		



Rev.	Description	Approved	Date