

# 道路安全

# Road Safety Bulletin

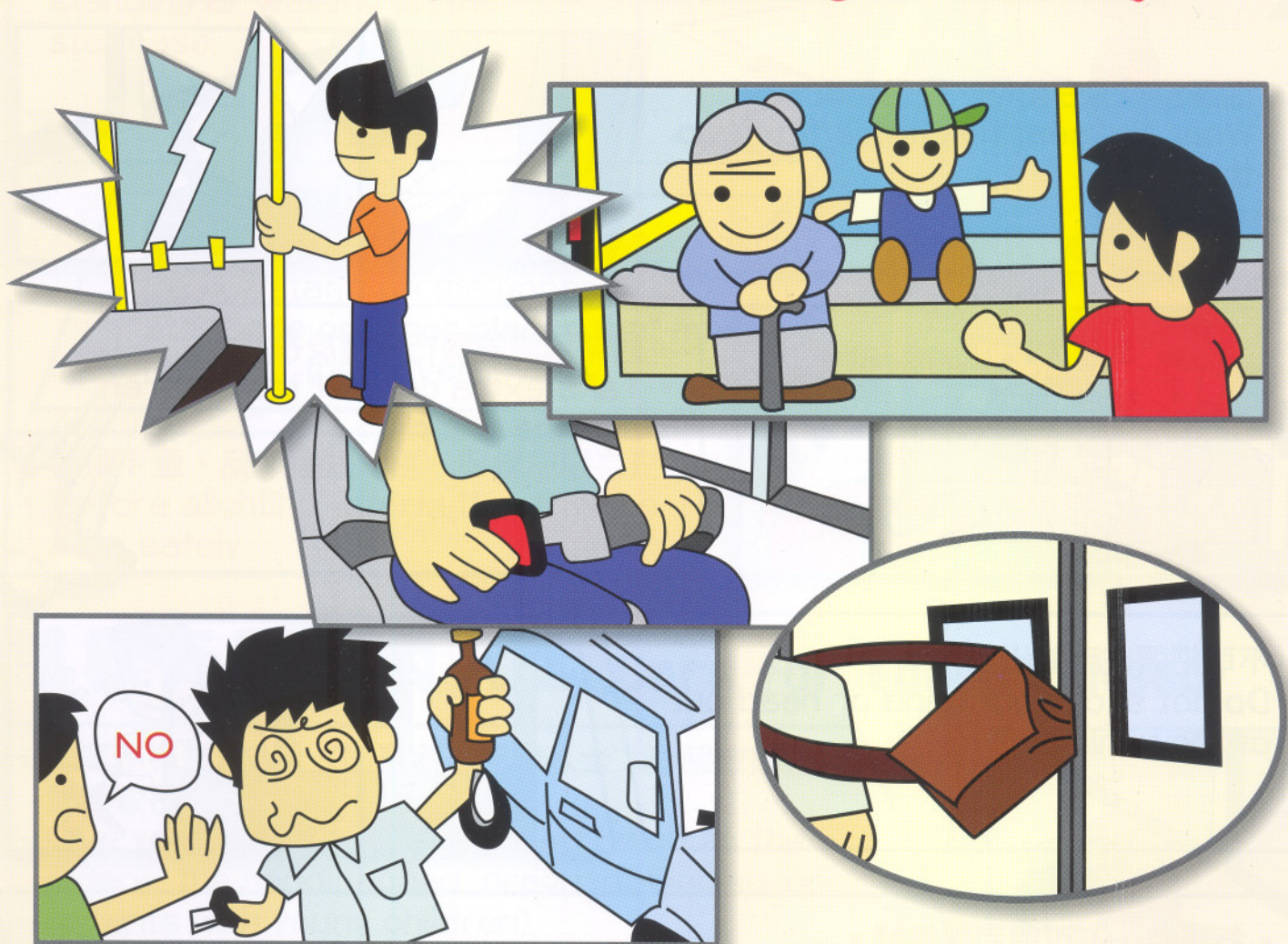
# 23

道路安全通訊

本通訊已載於運輸署網頁以供瀏覽  
This bulletin is also available on TD's homepage at

[http://www.td.gov.hk/road\\_safety/road\\_safety\\_bulletin/index\\_tc.htm](http://www.td.gov.hk/road_safety/road_safety_bulletin/index_tc.htm)

## 乘車規則要遵守 · 司機乘客要留神 Smart Tips on Passenger Safety



讓讓人 Drive smart



大家都開心!  
with Courtesy



出版  
Published by

 道路安全議會  
The Road Safety Council

<http://www.roadsafety.gov.hk/>

編輯  
Editor

 運輸署  
Transport Department



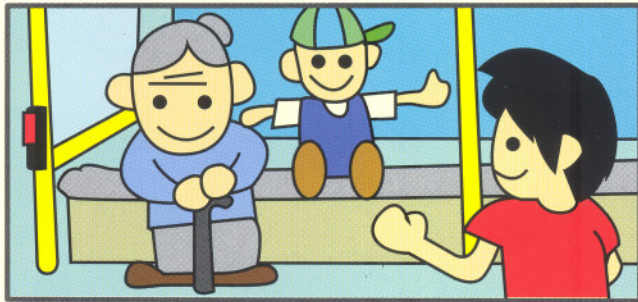
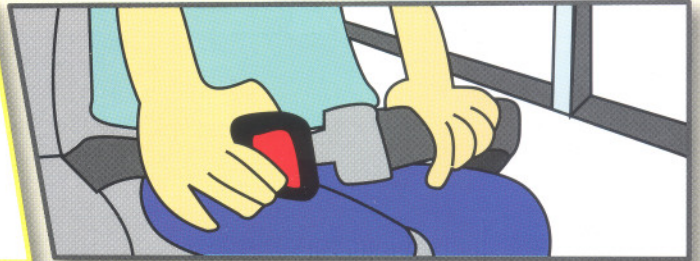
# 乘客安全提示 Safety Tips to Passengers

乘客在乘搭各種交通工具時要處處小心，確保自己及隨行長者及幼童的安全。

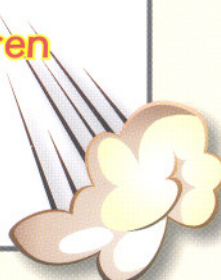
Passengers taking various forms of transport should take all precautions to ensure the safety of themselves and their elderly or children during the journey.

- 車未停定，切勿上車或落車。
- Do not board or alight the vehicle while it is in motion.

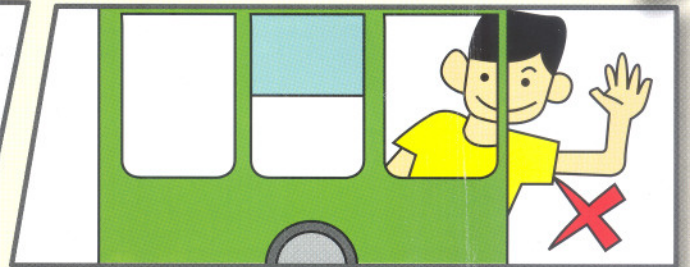
- 如座位設有安全帶，應當佩戴。
- Wear the seat belt if it is fitted on the seat.



- 應特別照顧同行兒童及長者。
- Take extra care of the children and the elderly.



- 不可把頭或手伸出車外。
- Do not stick your hand or head out of the vehicle.



- 行車時，不可與司機談話。
- Do not talk to the driver when he is driving.

- 下車後立即離開馬路，走上行人路或安全地方。
- Walk onto the pavement or a safe place immediately after alighting.

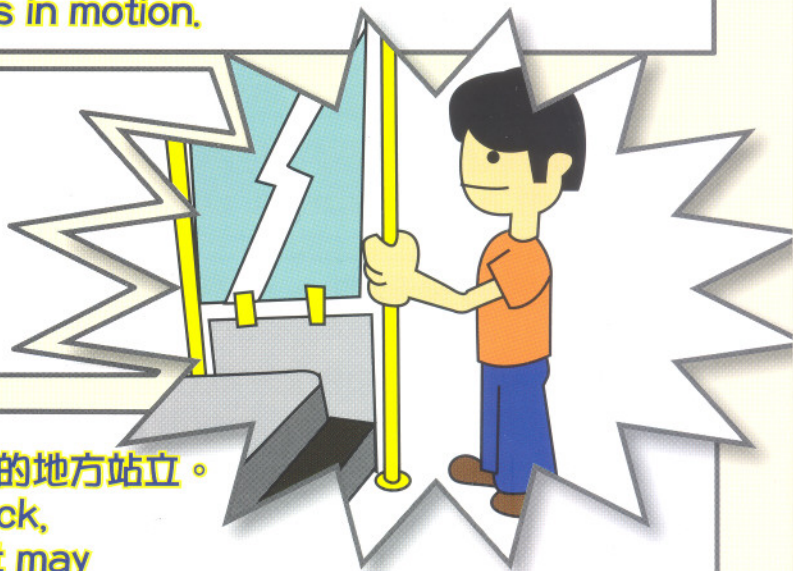


- 上落車時，應留意隨身物品/衣服有否被車門卡着。
- Make sure your personal belongings / clothes that are not trapped by the door of the vehicle when boarding or alighting.



- 行車時，切勿在車廂內走動。
- Do not run about when the vehicle is in motion.

- 站立或上落樓梯時，握緊扶手。
- Hold on to the handrail while standing or walking on the staircase.



- 不可在上層、樓梯或阻礙司機視線的地方站立。
- Do not stand on the upper deck, staircase or other places that may obstruct the drivers' view.

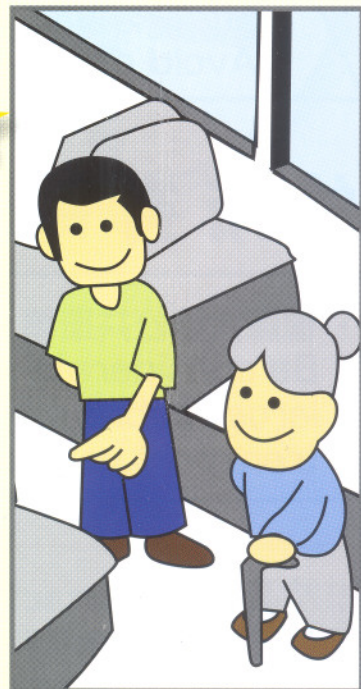
- 如須下車，及早通知司機，好讓司機有充分時間安全停車。
- Before alighting, inform the driver early to allow time for the vehicle to stop safely.

## 照顧有需要的人士 Care for Those in Need

- 讓座予有需要人士（如長者，殘障人士，孕婦或攜帶兒童的家長）。
- Give your seat to those in need (such as the elderly, the handicapped, pregnant women, or parents with young children).

- 不要攜帶過大/過重的物品乘車，以策安全，及避免引致他人不便。
- Do not bring along bulky/heavy belongings to avoid danger or causing inconvenience to others.

- 關愛長者，讓他們有充分時間上落車。
- Allow more time for the elderly to board / alight.



# 給公共交通車輛司機的提示

## Smart Tips for Public Transport Vehicle Drivers

負責任的公共交通車輛司機首重乘客的安全，要時刻保持警覺，以應付路面突發事件。注意要項如下：

Responsible public transport drivers should give top priority to the safety of passengers. Drivers should always be alert and prepared to respond to any incidents on the road. Here are some tips for the drivers:

- 保持安全車速，不要突然加速或剎停車輛。
- Drive at a safe speed. Do not accelerate / stop abruptly.

- 前車保持安全距離，切勿胡亂轉線
- Keep a safe distance from the vehicle in front and change lane carefully.



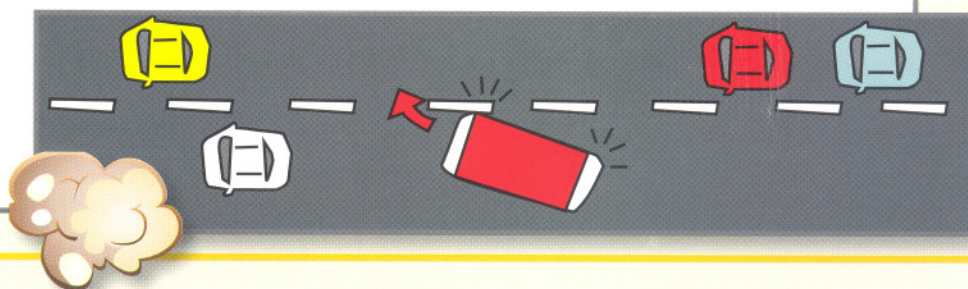
- 不可酒後 / 藥後駕駛。
- Do not drink drive or drive under the influence of drugs.

- 避免疲勞駕駛
- Avoid driving while fatigued.

- 避免身體不適時駕駛。
- Avoid driving when ill.

## 給所有司機的提示 Smart Tips to All Drivers

- 禮讓大型公共車輛。
- Be considerate to larger public transport vehicles.



### 聯絡我們 Contact Us

如對本道路安全通訊有任何意見，可電郵 [rssd@td.gov.hk](mailto:rssd@td.gov.hk) 與運輸署聯絡。

If you have any comments on this Road Safety Bulletin, please contact Transport Department (e-mail : [rssd@td.gov.hk](mailto:rssd@td.gov.hk))